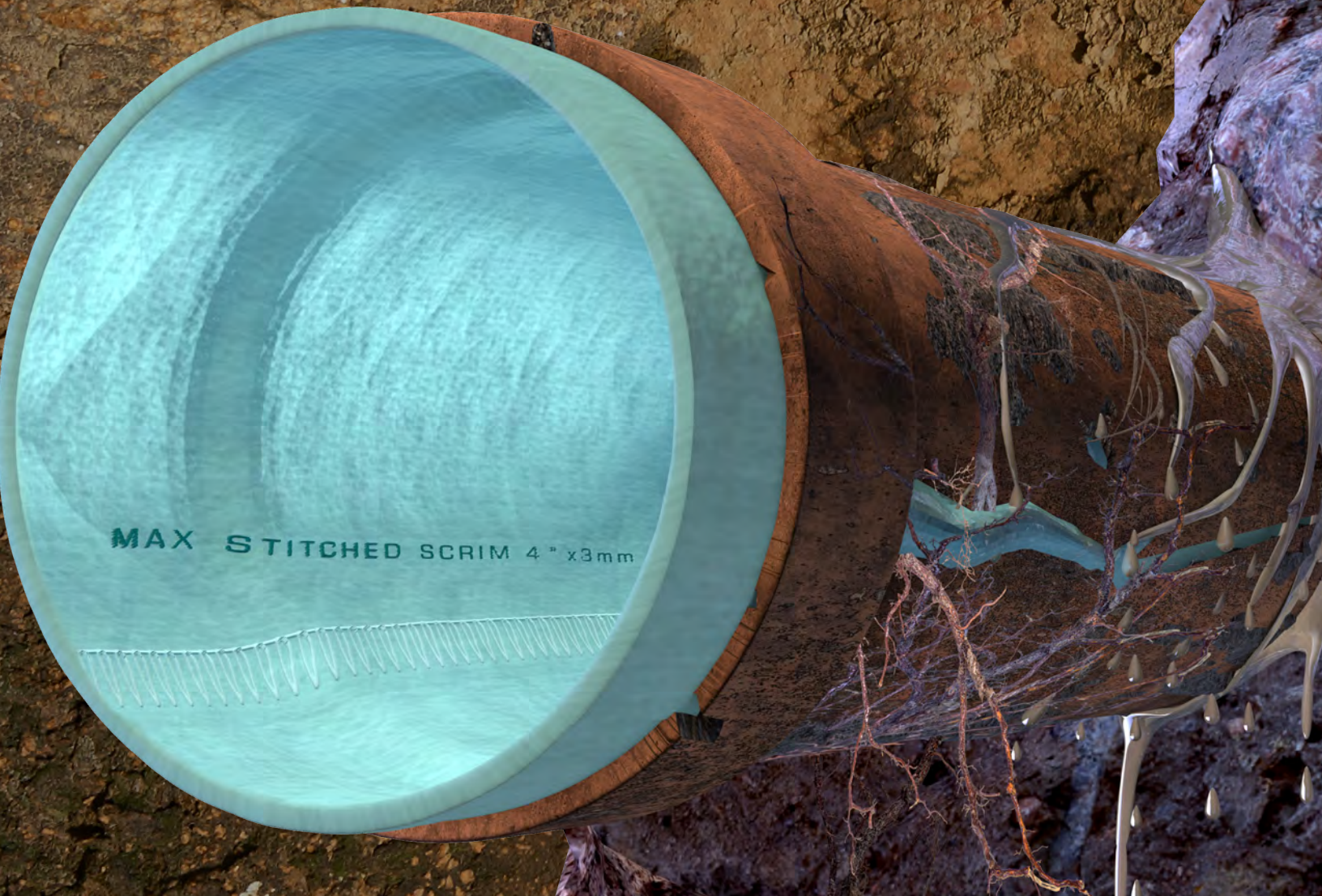


MaxLinerUSA.com



EVERYTHING YOU NEED TO  
**SUCCEED IN CIPP**





# The Leader

More than 25 years ago, MaxLiner® brought to North America a fast, affordable and effective way to address the growing demand for rehabilitating lateral and vertical pipelines. The MaxLiner system, small diameter laterals and vertical pipelines - featured around the compact Max LinerGun®, includes the installation equipment, consumables, heat- and UV-curing options, supplemental products, accessories and hands-on training you need to rehabilitate failing pipes with minimum disruption or cost.

## MaxLiner Equipment:

*The Most Compact CIPP Lining System*

Our lining system is ideal for drain, waste and vent pipes – including vertical piping and small diameter applications, using the best materials and equipment available. Specially designed for portability and accessibility, the Max LinerGun, wet-out equipment and each of our heat- and UV-curing options are compact to be quickly and easily transported, taking you from one job to the next with efficiency and ease.

The MaxLiner System is small enough to fit into your current service vehicle and does not require a large crew to get the job done. The highly portable system and variety of lining materials allows you to install several liners in a day and is ideal for high-production lining projects.

A photograph of the MaxLiner equipment, showing a yellow Max LinerGun unit with various hoses and components attached. The equipment is set up on a metal frame. The text is overlaid on the bottom half of the image.

**Visit [MaxlinerUSA.com](http://MaxlinerUSA.com) to purchase equipment, lining materials and accessories online!**





## Max LinerGun®

The aluminum Max LinerGun is a compact inversion unit for lining 2"-12" diameter pipes. Ideal for residential and industrial drains in horizontal or vertical applications. Methods include open-end for blindshots to the main and closed-end for pit to pit. The Max LinerGun rests on an adjustable stand and comes with 4", 6" and 8" Adapter Rings. This unique design does not limit the length of pipe to be lined. Both air and water inversion can be done.

## Max LinerDrums™

Compact, lightweight, aluminum inversion drums suitable for air, water, UV, and steam installations.

LinerDrum 700:

- Width 23.2" – easily passes through the narrowest doorways.
- Detachable wheelbase and extendable carrying handles – carry it up and down stairs with ease
- Height 44.9" high (37.8" detached) 130 lbs (110 lbs detached), capable of holding 135' of 4" liner – ideal for in-building use

LinerDrum 900 and 500 models available for more or less capacity requirements.



## MaxLight™ UV Cure

Revolutionary LED technology allows contractors to optimize their operations by increasing efficiency at the job site up to six times. MaxLight platform wet was developed to cure felt, felt / glass hybrid and fiberglass liners by either inverting or pull-in-place.

- Several interchangeable LightHeads for faster curing speeds or navigating multiple bends up to 90(degree sign) in smaller diameters
- Two monitors and wireless mobile connectivity to view the cure
- Single-component resin that is Styrene and Amine free
- Pre wet-out liners in your shop up to several weeks ahead. Increase your efficiencies and profitability



## Max E-Roller™

A compact electric calibration roller that mounts to a table or is easily transported closer to the worksite by unlocking from the detachable baseplate. Ideal for a small crew wetting out longer liners with a diameter range up to 12". This 48lb, 110v powered unit operates with a foot peddle, allowing for a hands-free operation. Additional innovations:

- Built-in gap setting display
- Adjustable speed
- Directional switch
- Pressure limit safety
- Emergency stop



The portable and manual Max CalibrationRoller™ also available.



## Max HotKick™ 2.0

Mobile Hot Water Curing System with built-in recirculating pump and gauges so you can monitor your curing pressure, output and return water temperatures. The unit is a propane-fueled system, and comes with a 3"- 8" curing manifold with pressure relief Kunkle valve, two 25' red and black recirculation hoses, pressure gauge, temperature gauges, band clamps and pull strap.

## Max Inferno™

The Max Inferno Hot Air Curing System is a very compact, electric-powered, dry air portable heating unit. The self-contained unit is digitally temperature controlled which allows you to set the heat and regulate air pressure for use in 3"- 6" diameter pipes. Ideal for vertical applications, drop sewers and where hot water or steam curing is not applicable. The complete system includes curing manifolds, 50' of 30amp extension cord and power plug adapters in a rugged case for secure transportation.





## Prep for Success

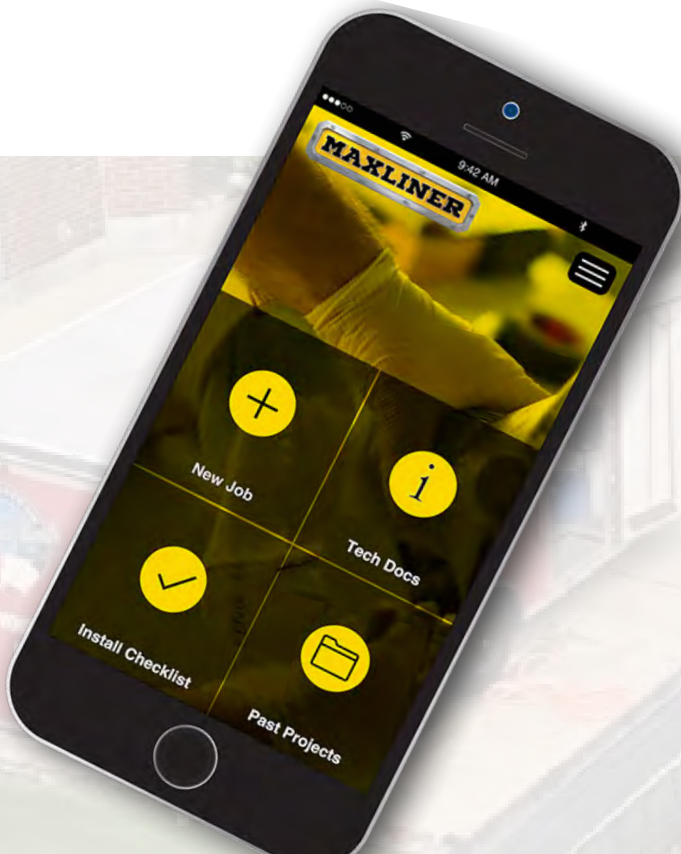
High-speed milling machines designed by contractors for contractors to safely and effectively remove roots, descale pipes and clear the toughest blockages. There are a magnitude of attachments available from grinding chains and sanding panels to reinstatement heads and grabber tools.

## Max Cutter™

Pneumatically operated lateral connection reinstatement tool that navigates inside 3"- 6" lined pipe and clears bends up to 90°. Utilizing a part-turn gearbox and air-powered locking skids, it cuts through liner without cutting into your budget. With a turn of a switch, the cutter locks in place allowing 360° of rotating ability. Simply attach the steel pushrods to the steerable handlebar controls to guide the cutter to each connection.



**Standard Package:** Carrying case, accessory kit (centering skids, wrenches, screws, cutter balls), pushrod and airhoses (reach up to 60'). Additional pushrods and hoses, cutter balls and miscellaneous parts available. Other options available based on your requirements.



## Questions while in the field?

Download the MaxLiner App for Geo Locate, resin calculator, installation log, estimated cure times and more!





# Lining Materials

We've partnered with leading raw materials suppliers to develop proprietary blends to manufacture the finest liners, CalTubes® and environmentally-friendly epoxy resins available. When it comes to quality materials and durable products – the components to successful CIPP installations – MaxLiner refuses to compromise.

MaxLiner offers several different 100% solids epoxy resin combinations to fit your project requirements. Our non-shrinking, VOC and styrene-free resins yield physical properties above minimal industry requirements, create a superior bond to the host substrate and create a leak-free, tight fitting pipe. Resins and hardeners are available for everything from a short pot life for fast-curing applications to an extended pot life for a more controlled installation. Choosing the correct liner and resin is only part of equation. Whichever you choose, we've taken the paperwork and calculations out of the process. We didn't just create a resin calculator, we integrated all of our Technical Data Sheets (TDS), Safety Data Sheets (SDS) and installation log into our mobile app so each project can be digitally logged, saved and shared back to the office, or with the client.

**Hit The Mark Everytime!**

**Max Scrim Liner™**

**Perfect for 4" to 6" Transitions**

**Max Flex4D™**

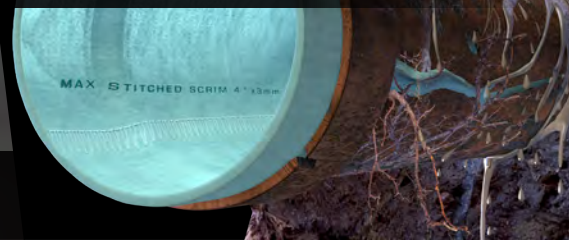
## Liners

**Max FlexLiner™**

**Max SuperFlex™**

**Max WovoLiner®**

MaxLiner has an unparalleled commitment to understanding the unique field application requirements of CIPP installers, exploring and developing innovations to meet those needs.





Our quality CalTubes press the liner against the host pipe during the curing process and provide optimum flexibility and excellent resistance against tearing and higher temperatures in both open-end liner (blind-shot) and pull-in-place applications.



Max PreLiner™

NEW



Max CalTube®-HF



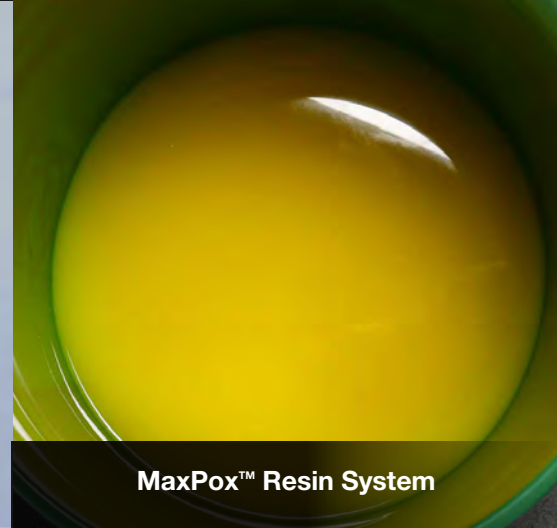
Max CalTube® Stitched



Max CalTube® Stitched

## Resins

To complement our assortment of liner options, MaxLiner offers several different resin combinations to fit your project requirements.



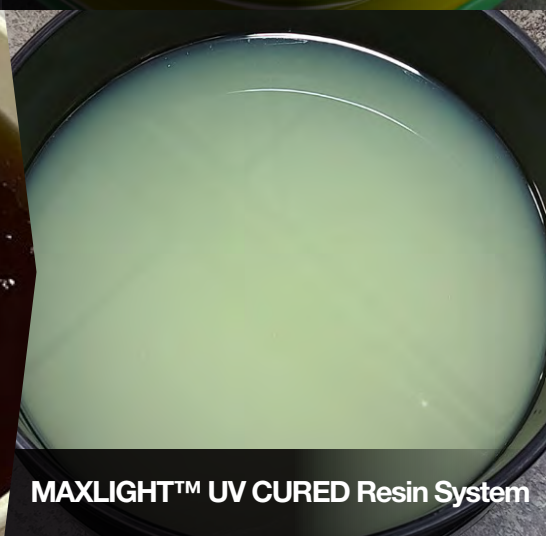
MaxPox™ Resin System



MaxPox™ Resin 30, 60 & 180 Hardener



MAX VERTIPOX™ UV Resin System



MAXLIGHT™ UV CURED Resin System

Ask about our full range of resin and hardener formulations.

# You're Never Alone.

## MaxLiner's Dedicated Commitment to Ongoing Training and Support.

While the MaxLiner System is easy to use, understanding lining materials and best practices are part of our included training package. We provide both classroom and live field condition training, or a combination of both, abiding by industry installation and application standards. Our goal is to ensure that installers have the highest level of confidence in their ability and are successful at both correct CIPP installations and growth. Earning a Certified Training Certificate doesn't stop there. Our facility is open to everyone for continuing education and training. We know that each and every CIPP project is unique, so when the need for technical experience and guidance arises, our team of technical experts are available by phone or alongside you at the jobsite. Partnering with MaxLiner, we're always in your corner.



*"Thanks for all your warm hospitality, from the first phone call we made to MaxLiner, to our exit out the door - it's great to have someone be friendly while still getting everything right and giving a damn."*

*-Dave and John  
Pipe Shark*

*"Your rep stayed on the entire time the work was being done. The reps from each engineering firm also came to witness the installation and get information from your rep, who is very knowledgeable and did an excellent job. So I just want to say thank you!"*

*-Patrick J. Veale*